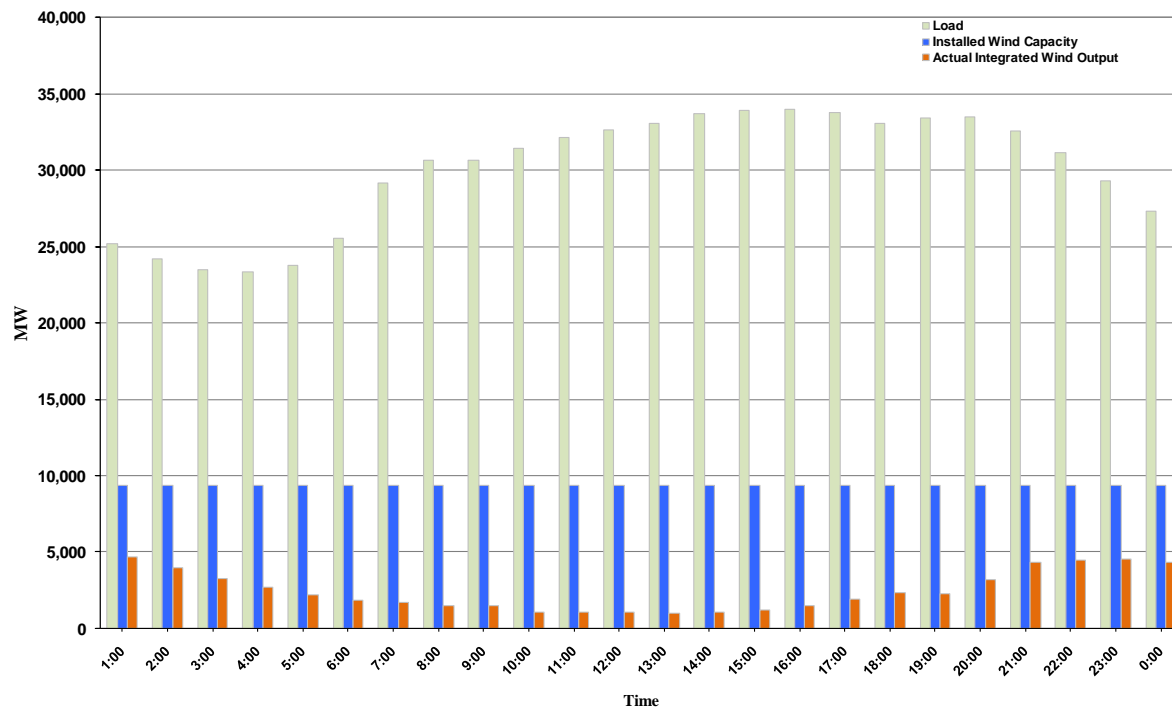




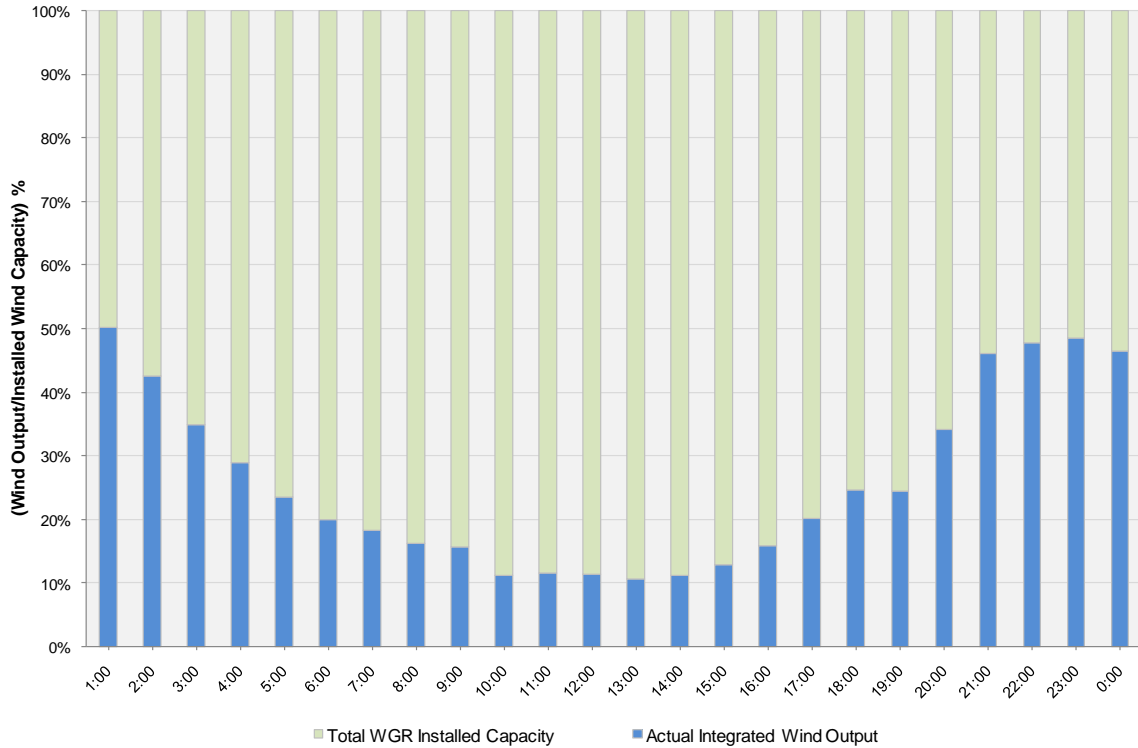
ERCOT Grid Operations Wind Integration Report: 02/18/11

Peak Load	33,955 MW
Load Peak Hour	16
Wind Record 12/11/10	7,227 MW
Max Wind Value	4,944 MW
Wind Peak Hour	00:00:32
Wind Integration %	19.02

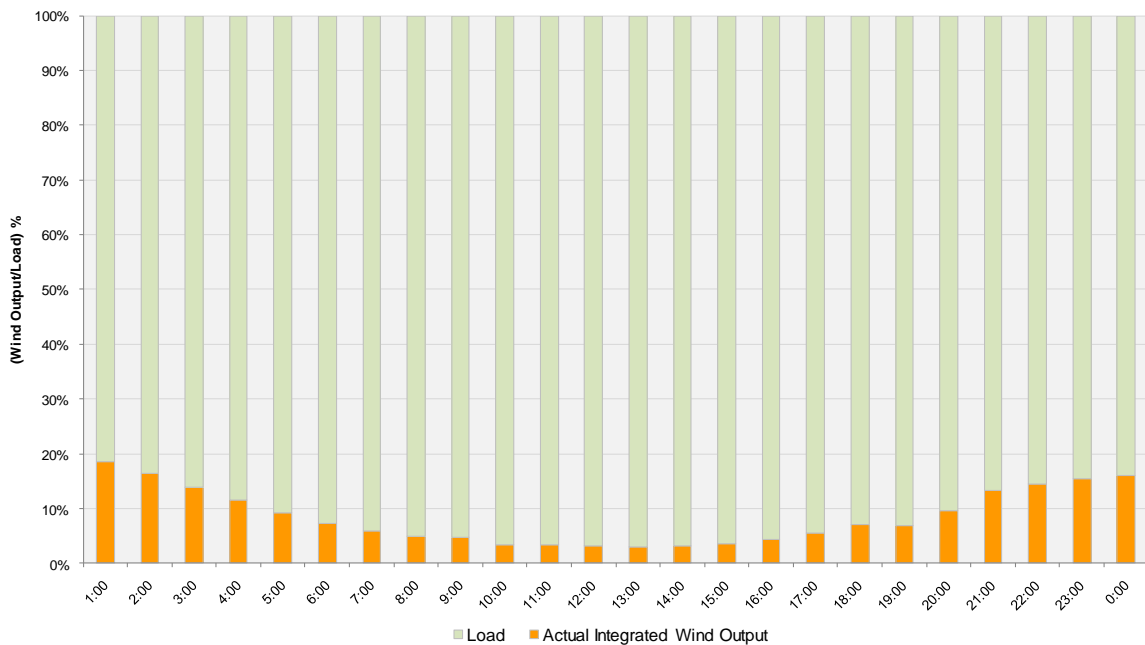
Hourly Average Actual Load vs. Actual Wind Output
02-18-2011



Actual Wind Output as a Percentage of the Total Installed Wind Capacity
02-18-2011



Actual Wind Output as a Percentage of the ERCOT Load
02-18-2011



ERCOT Load vs. Actual Wind Output 2/11/2011 - 2/18/2011

